

Nova Scotia Wildfire Relief, Recovery and Rebuild Funds

How does this work? Who can access what supports?



Case Managers

Working directly with families and individuals who have lost homes or who had other significant impacts, to support next steps and identify gaps after insurance, government programs and other supports are accessed.



**Canadian
Red Cross**

How Much?

Raised \$5.7M as of July 4, 2023.

For Who?

Families and individuals who have lost their homes or had other significant impacts due to wildfires.

Funds Matched?

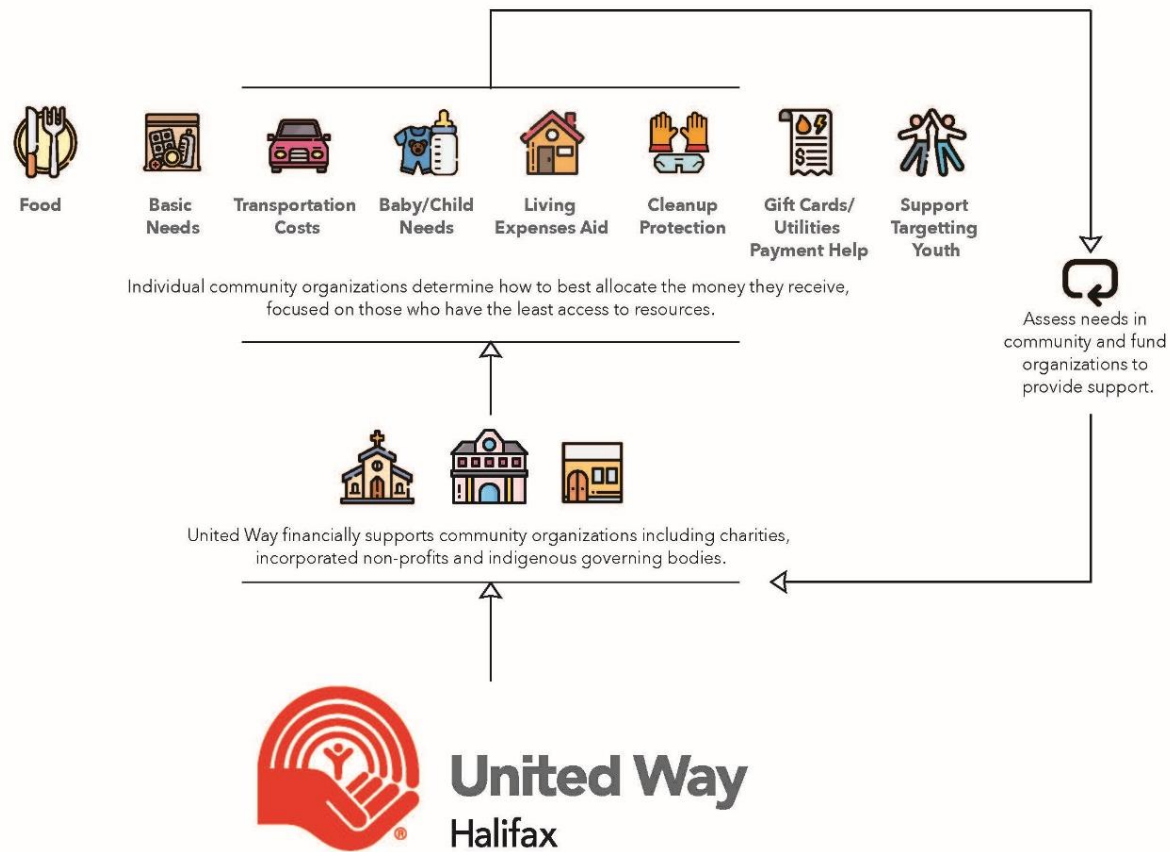
Donations received by June 29, 2023, may be matched by the Canadian and Nova Scotia governments.

When Will Funds Flow?

Ongoing.

Next Steps?

Canadian Red Cross case managers are reaching out to those who have lost their homes or had other significant impacts. More information at redcross.ca/atlanticwildfires



How Much?
For Who?

Who Can They Fund?

When Will Funds Flow?

Next Steps?

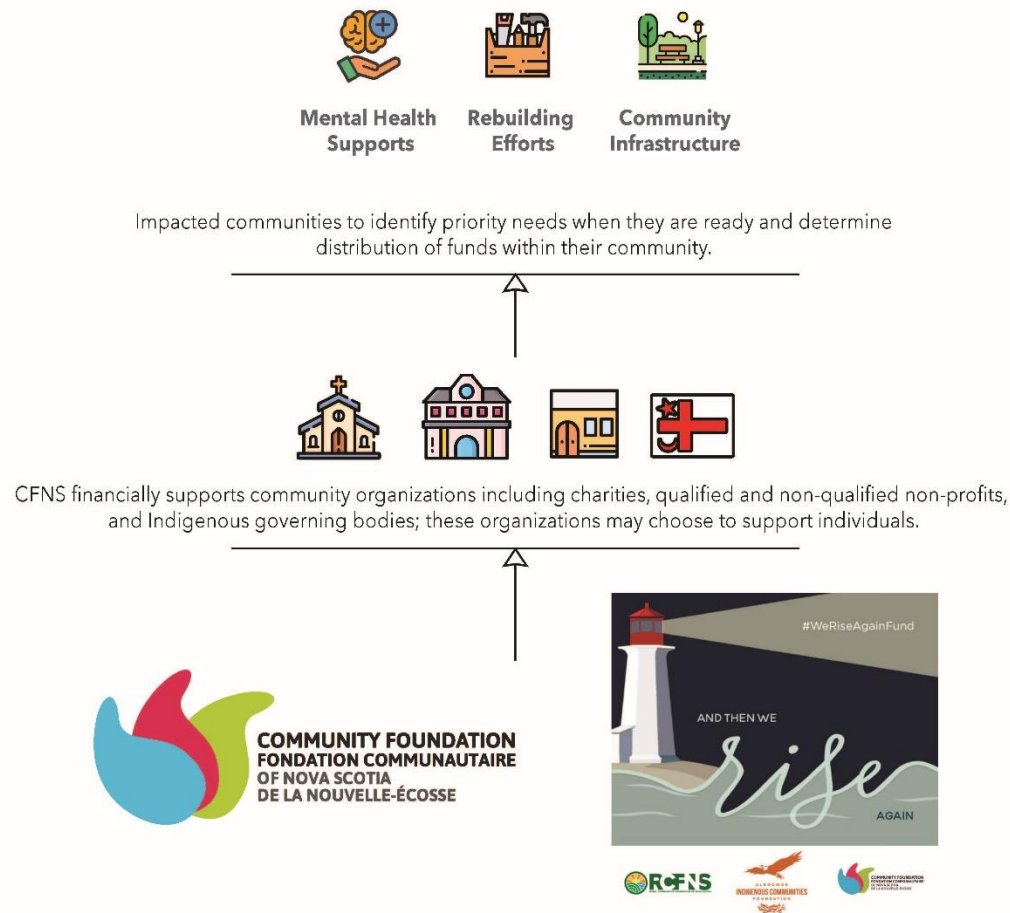
Raised \$1.4 M.

To support people affected by wildfires in Upper Tantallon and Hammonds Plains and Shelburne County, with a focus on people with the least access to resources or who are living in or close to poverty.

Serves individuals by funding community organizations and non-profits. Legally unable to fund individuals directly.

Flowing now, focused on short- and mid-term needs like food, transportation, personal items, evacuation expenses & mental health supports.

Looking to assist uninsured families and individuals whose primary residence was significantly impacted by wildfires - please contact WildfireRecovery@unitedwayhalifax.ca



What?

For Who?

Who Can They Fund?

When Will Funds Flow?

Next Steps?

We Rise Again Fund - working with communities to amplify fundraising efforts.

Will support those communities acutely impacted by wildfires in HRM and Shelburne County.

Legally able to fund community and non-profit organizations.

Funds to be used in long-term, when communities are ready.

Will work with communities to determine need based on funds available (i.e. playground, community centre, community garden, social gathering, mental health supports, etc.).